

Winter 2012 Quarterly Report

Computer Lab Management

Prepared by Tim Leamy

Computer Lab Management (CLM) operates 18 computer rooms across the UC Davis campus. These consist of 12 computer classrooms and 6 open access labs with a total of 558 installed stations.

In the coming years, CLM expects faculty members to continue to adopt and integrate more educational technology into their classroom teaching. Consequently the demand for technology-aided and technology-focused classes will grow. Therefore, CLM is looking for ways to add computer classrooms or reconfigure existing rooms to add more computer stations.

Some of the significant items from Winter 2012 include:

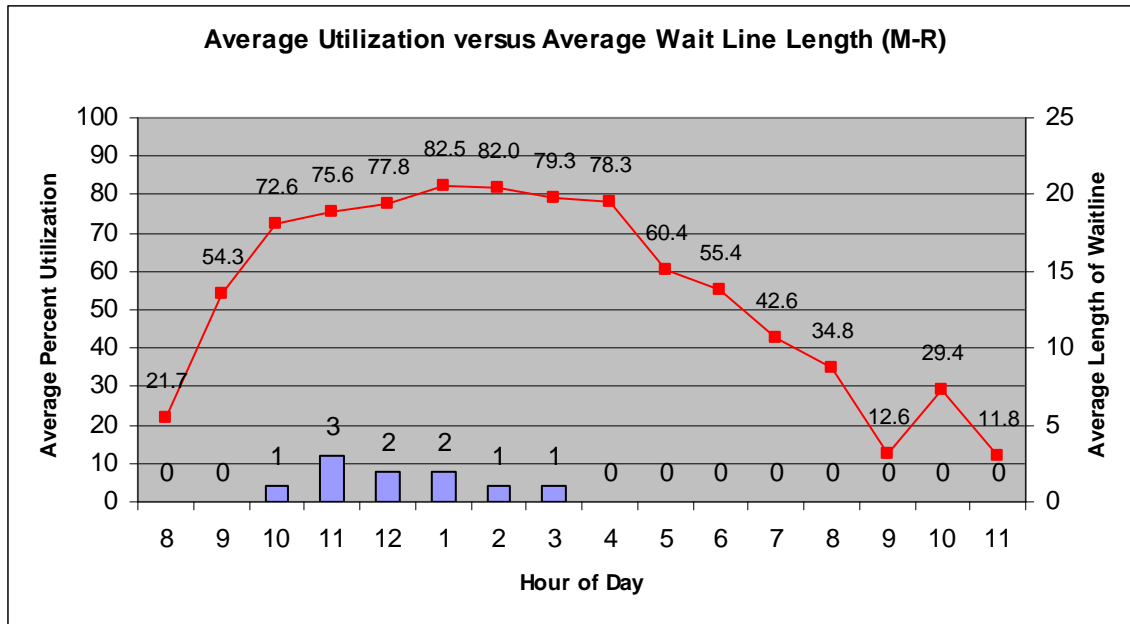
- CLM opened three computer rooms in the Student Community Center (SCC) and moved the services from Hart Hall. The Hart computer rooms closed permanently at the end of Fall 2011. The new rooms in the SCC provide:
 - Two 24 seat computer classrooms. The classrooms are divided by a partition and can be combined to create a 48 seat classroom.
 - The IET Media Lab which offers video, audio, and design computer stations equipped with high-end hardware and software for faculty, staff and students to create their own projects.
 - The IET Media Lab, which provides access to media equipment and software for students, staff and faculty to create their own projects utilizing scanner, video, audio, and general media computer stations.
 - Open-Access stations for drop-in computer use.
 - A wireless printing location (<http://wirelessprinting.ucdavis.edu/>).
- CLM continued planning to move the computer classroom from 1131 Meyer to Hutchison Hall over Summer 2012. Rooms 76/78/86 Hutchison will be renovated, the open-access computer lab in 75 Hutchison will move to the renovated space, and the classroom in 1131 Meyer will move to 75 Hutchison. This consolidation will allow a saving in student salaries while preserving a similar level of service for our clients
- The total sheets printed in Winter 2011 increased by 6% to 925,484. This was the first increase in printing in many quarters. CLM believes that it's partially due to the new computer rooms in the SCC. It will be interesting to see if the trend continues. At some point, the amount of printing should stabilize after the drop caused by the Fall 2009 rate change.
- Computer classroom reservations have stayed relatively constant since the 08-09 academic year. The computer classrooms are reserved on average about 35 hours per week, which is the realistic maximum since most faculty try to avoid teaching in the early morning, evening, and Friday afternoons.
- Wireless printing use continues to decrease. Understandably, this decrease mirrors the overall drop in printing. However, we also see a steady drop in the number of unique clients who used wireless printing (633 in Fall 2008 to 178 in Winter 2012). CLM believes that part of the drop in wireless printing is due to students bringing SmartPhones to campus instead of their laptops.
- CLM conducted a student survey about computer room use. The results are posted at <http://clm.ucdavis.edu/pubs/survey/student-w12.html>.

Statistical Summary

Utilization

Overall Computer Room Utilization

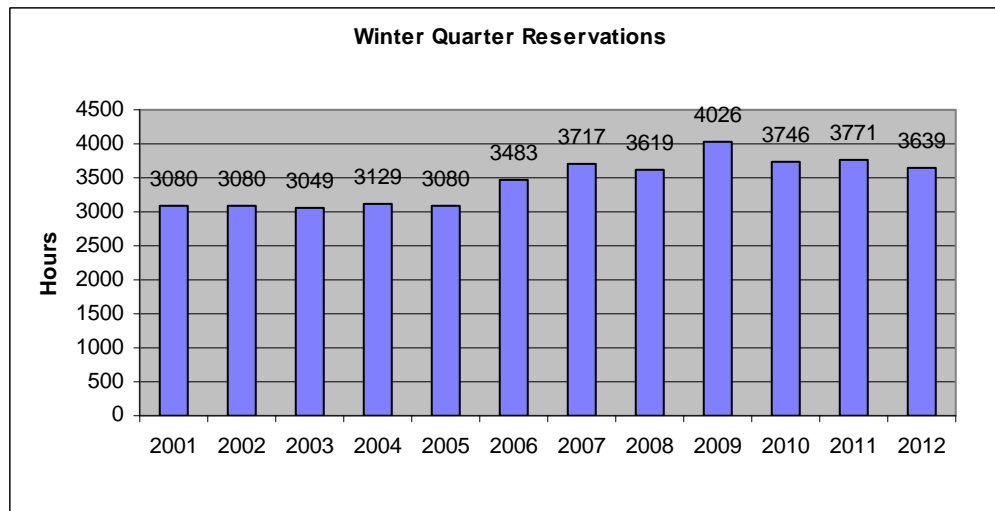
Computer Lab Management operates 18 computer rooms at UC Davis. These computer rooms experience high utilization during peak hours (10:00 am to 5:00 pm). Most open access labs also experience wait lines. The graph below combines utilization Monday through Thursday.



Utilization shows the general trend of high usage from 10am to 5pm continued this quarter. The overall utilization is slightly lower than past quarters. This may be due to opening the SCC earlier than expected and therefore without much publicity, so it took students some time to realize the new rooms were available. The wait line data in the graph is the average wait line for the entire quarter. The maximum wait line length of 31 on January 19th is many times the average.

Class Use

During Winter 2012 there were 3,639 class hours reserved in the computer classrooms. This total is down slightly from the 3,860 hours in Fall 2011. The computer classroom usage decreased slightly from the high in Winter 2009, but has been relatively flat for the last few years.

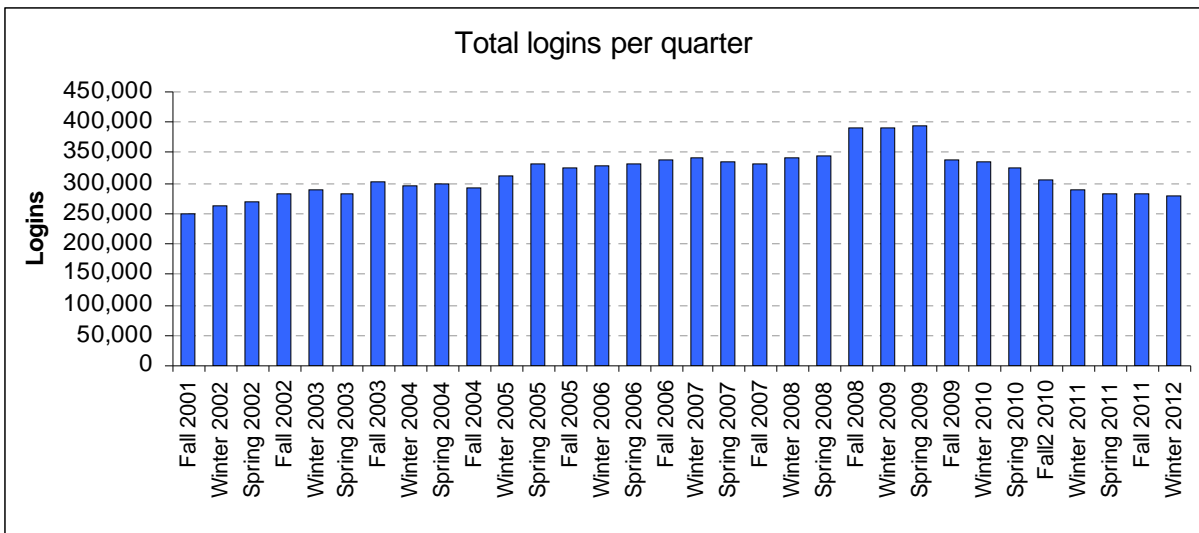


We expect that reserved class hours will increase for Spring 2012 as faculty and departments have started scheduling the second classroom in the SCC.

In addition, there were 166 class software installs and 81 class folders created during Winter 2012.

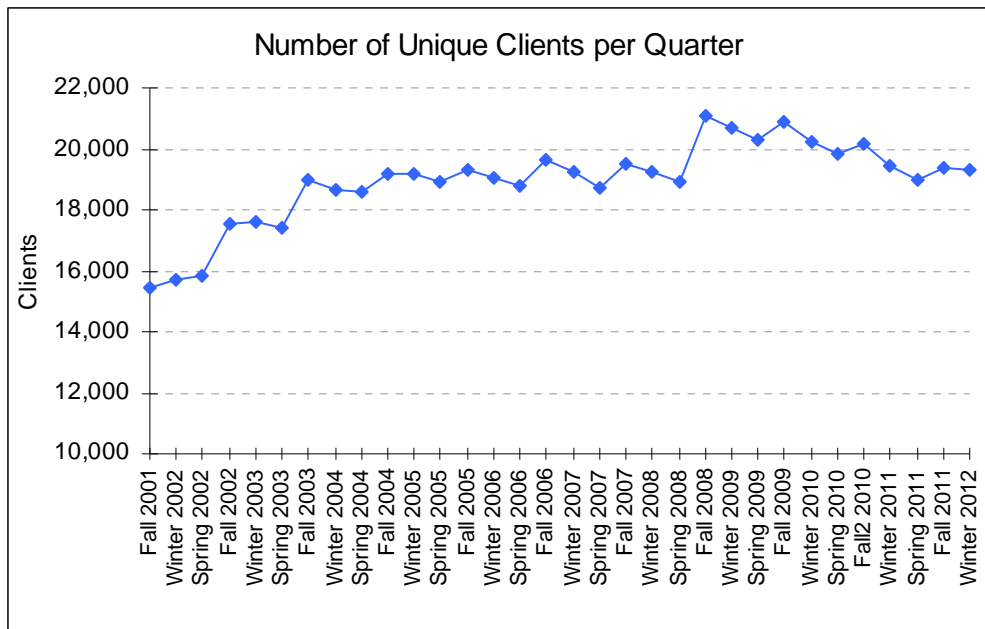
Number of Logins and Users

The total logins in Winter 2012 decreased slightly to 279,089, a 0.8% drop from Fall 2011. The number of logins has dropped from 08-09, most likely due to a combination in the decrease of open hours (a 17% from Fall 2008), the normal drop in number of students at UC Davis every Winter quarter, and the printing rate change decreasing demand.



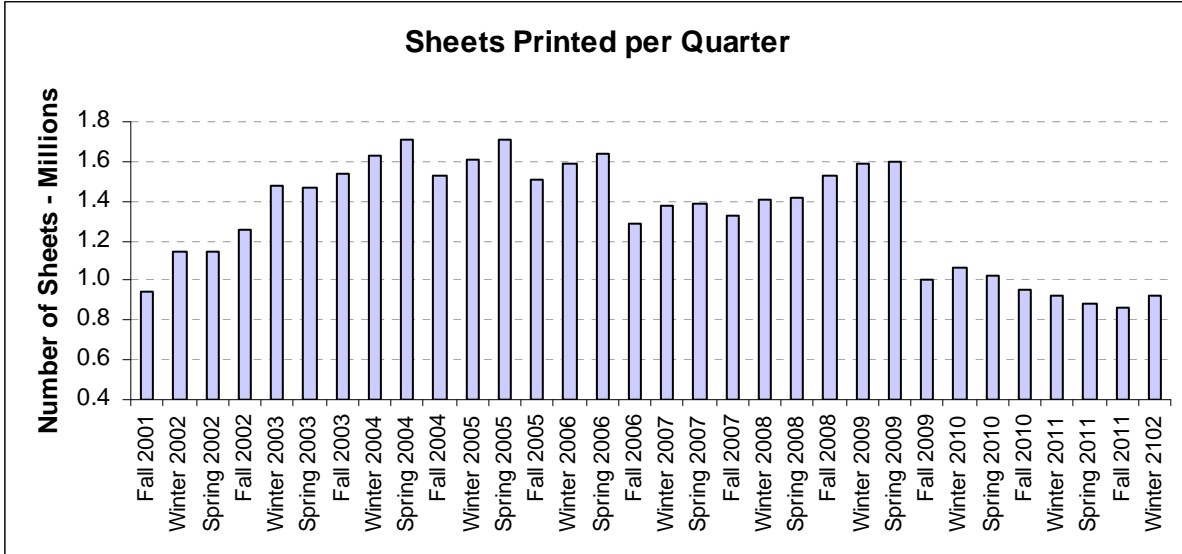
Unique Users

The number of unique clients decreased to 19,289 in Winter 2012. This is a decrease of 72 clients from Fall 2011. Of these, 18,674 were students. The decrease is normal as the total number of students at UC Davis typically drops from Fall to Spring quarter.

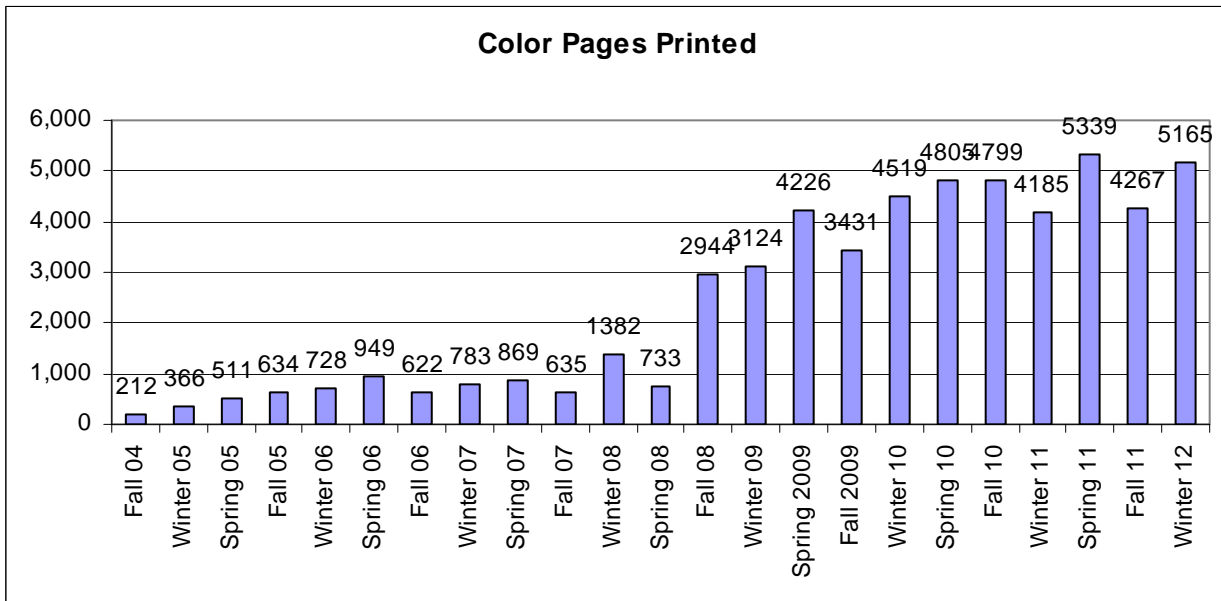


Printing

The total sheets printed in Winter 2012 increased by 6% to 925,484. The average sheets printed per client (of those who printed) was 57.74. The large decrease from 08-09 was due to the change in printing rates at the start of Fall 2009. We expect the total sheets printed and average sheets per client to slowly increase as students become accustomed to the new rate and realize that printing is still relatively inexpensive.



In addition, there were 5,165 color pages printed, a increase of 898 from Fall 2011.



There were 1,321 wireless print jobs, a decrease of 108 from Fall 2011. There were 178 unique clients who printed though the wireless printing system.

