

Fall 2017 Quarterly Report

Computer Lab Management

Prepared by Tim Leamy

Computer Lab Management (CLM) operates 21 computer rooms across the UC Davis campus. These consist of 14 computer classrooms and 7 open access labs with a total of 644 installed stations. CLM also manages eight departmental computer rooms with 226 installed stations for the School of Education, the UC Davis Language Center, and The Arts Admin Group.

Some of the significant items from Fall 2017 include:

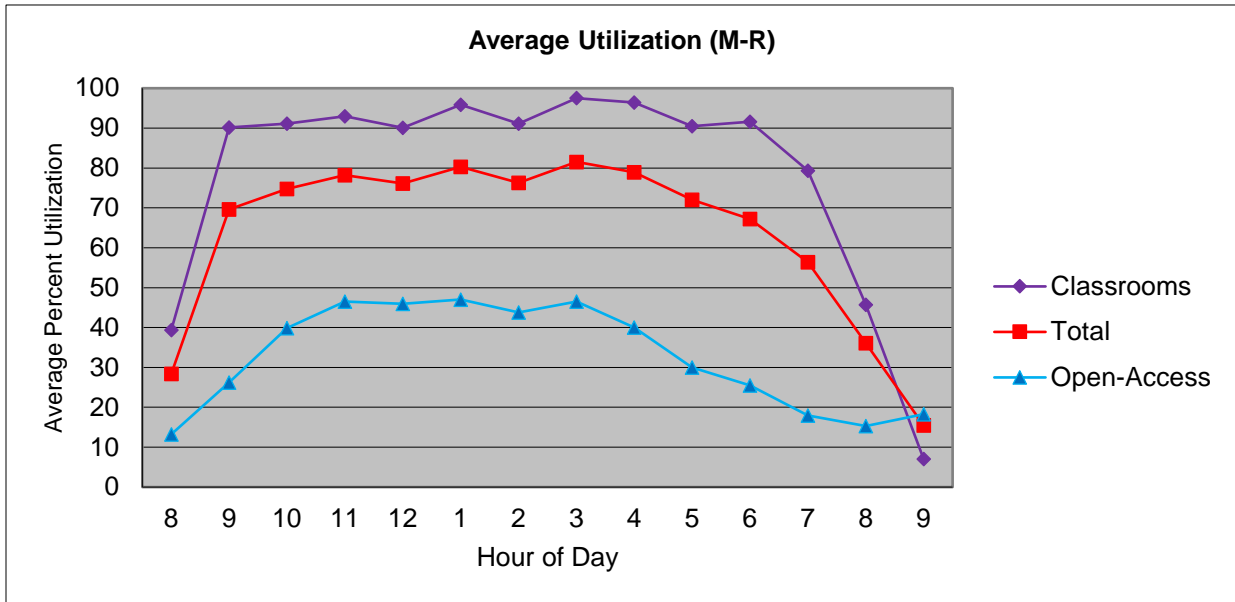
- During Fall 2017 there were 6,016 hours of instruction reserved in the computer classrooms. The number of class hours reserved has been fairly consistent over the past three years. CLM added two new computer classrooms in the Shields Library in Winter 2014, which caused a large jump between 2013 and 2014. However, the new Shields classrooms only account for roughly two-thirds of the increase since 2013. The remaining growth can be attributed to the 2020 Initiative and faculty members integrating more computer-centric methods into their classroom teaching. Therefore, CLM is continuing to look for ways to add computer classrooms and the resources to support them.
- CLM upgraded PCs in 163 Shields to Dell Optiplex 3050 computers with Intel Core i5 2.5GHz processor, 8GB RAM, and 256GB SSD.
- CLM upgraded many software packages - including Adobe Creative Cloud 2018, Vectorworks 2018, SketchUp Pro 2018, and SPSS 25 to meet instructor needs for their classes.
- CLM conducted a faculty survey about computer room use. The results are posted at https://computerrooms.ucdavis.edu/pubs/survey/faculty_f17.html. In general faculty were very pleased with the computer classrooms.

Statistical Summary

Utilization

Overall computer room utilization

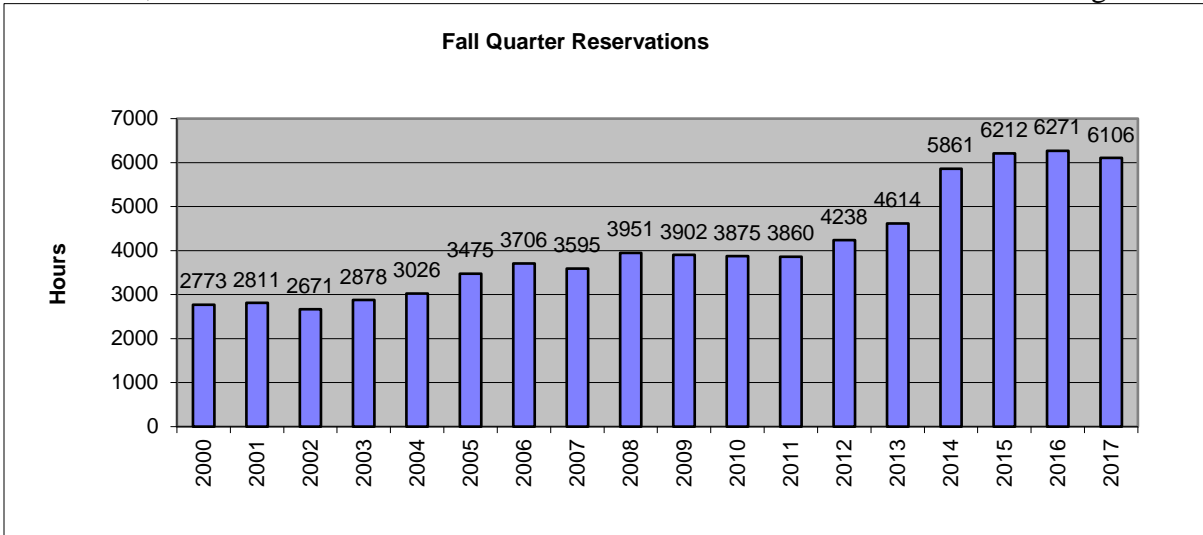
Computer Lab Management operates 21 computer rooms at UC Davis. These computer rooms experience high utilization during peak hours (10:00 am to 5:00 pm). The graph below shows average utilization for classrooms, open-access labs and all rooms for Monday through Thursday.



Classroom use is very high – averaging over 90% from 9am to 7pm. Open-access utilization is much lower.

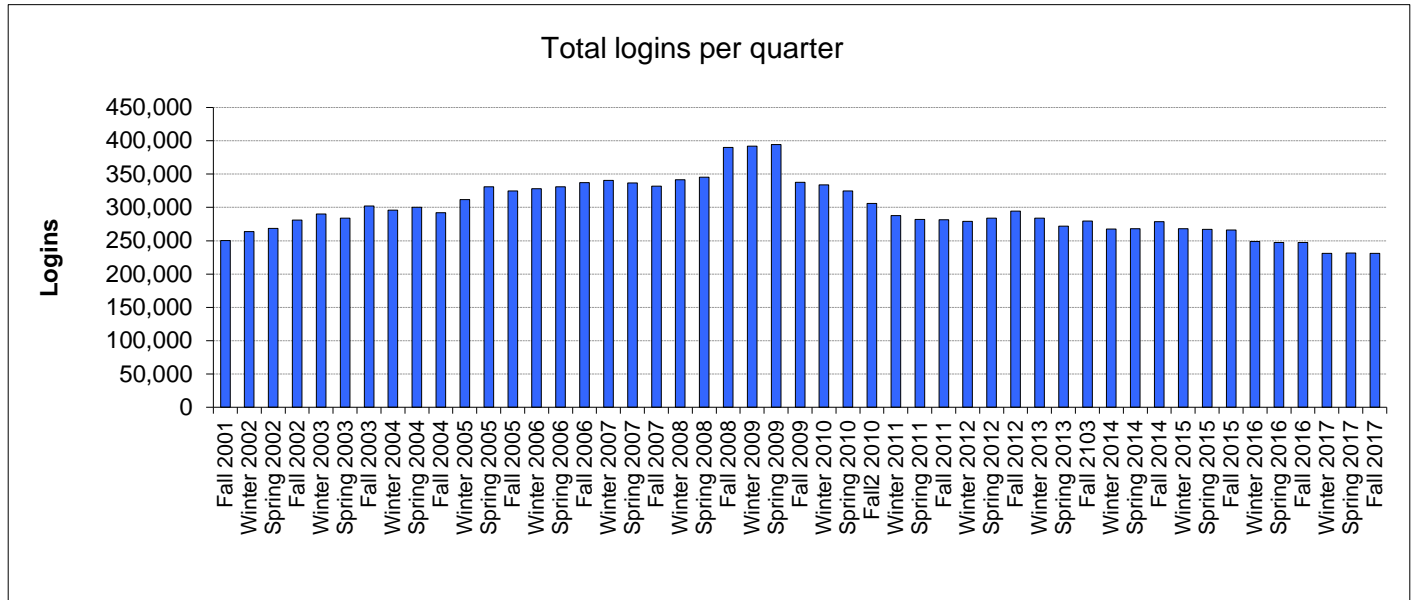
Class Use

During Fall 2017 there were 6,016 class hours reserved in the computer classrooms (a slight drop from Fall 2016). In addition, there were 205 class software installs and 165 class folders created during Fall 2017.



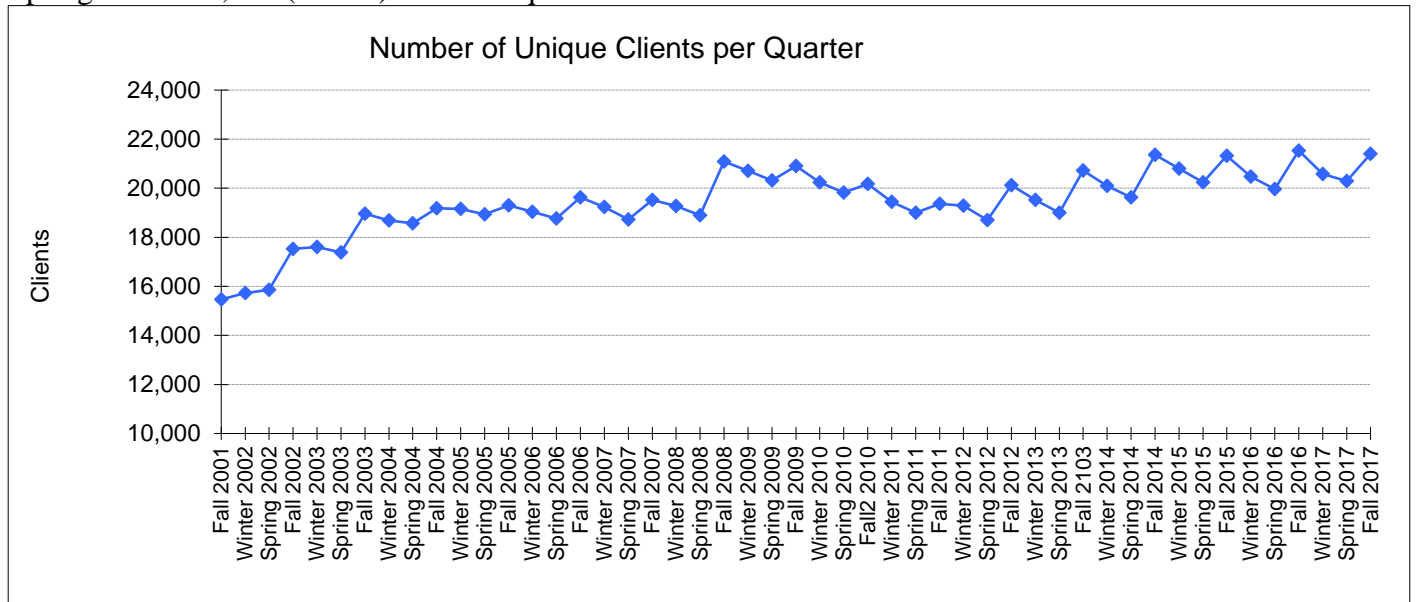
Number of Logins

The total logins in Fall 2017 were 231,024 (essentially unchanged from Spring 2017). There is a large decrease from the 08-09 average of 392,096.



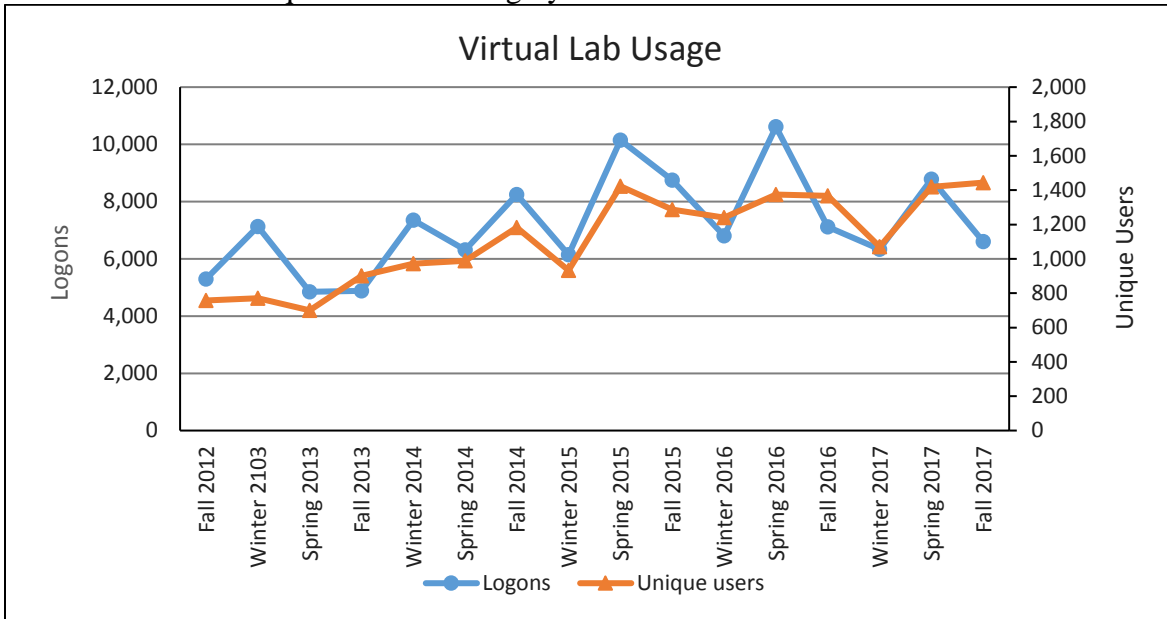
Unique Users

The number of unique clients increased to 21,406 in Fall 2017, which is an increase of 1,115 clients from Spring 2017. 20,906 (97.7%) of the unique clients were students.



Virtual Lab Users

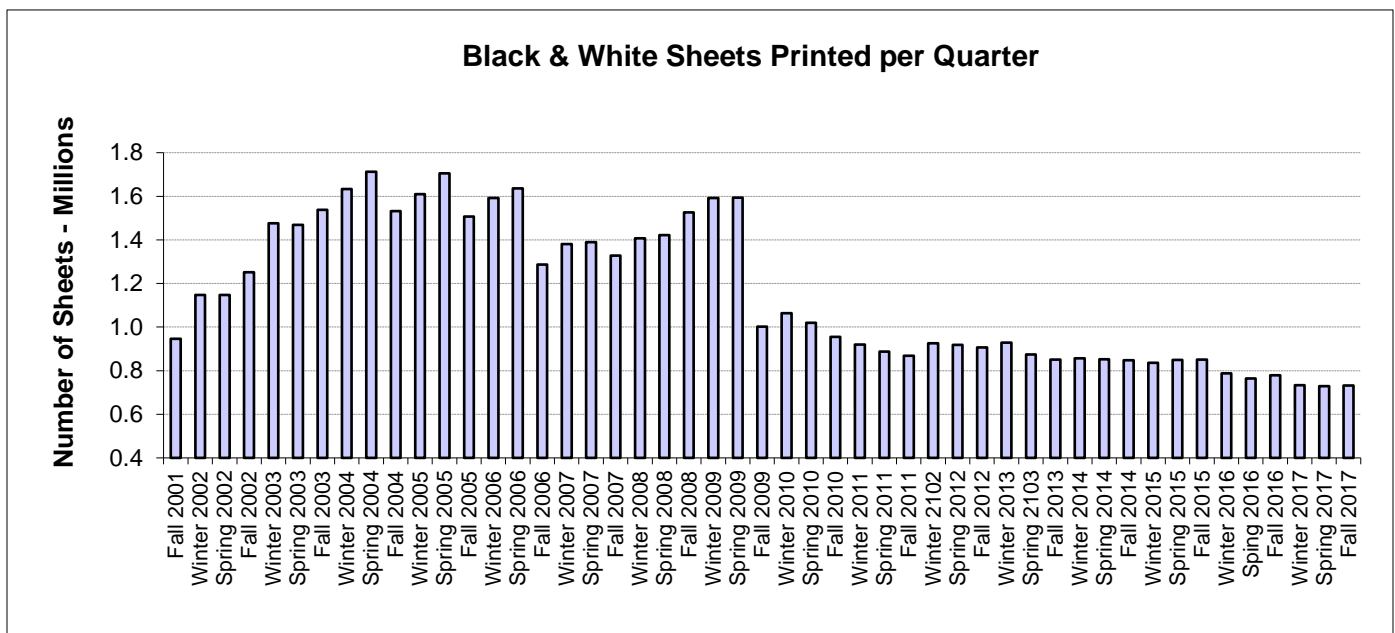
The IET Virtual Lab was used 6,603 times by 1,444 unique clients (the highest in CLM history). Spring quarter typically has the highest number of Virtual Lab logons, so there was a drop of logons from Spring 2017, while the number of unique users was roughly the same.



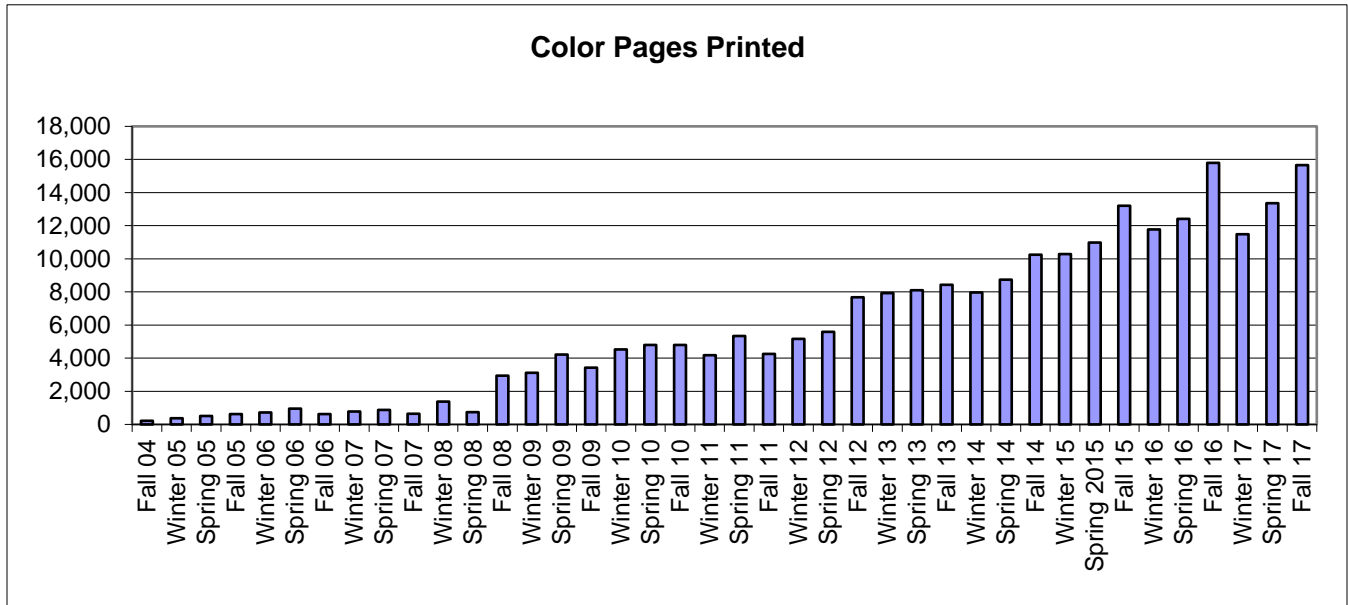
There were 586 denied connections to the virtual lab since there were no free stations. Most denied connections were during the day when there are only very limited number for computers available. The denied sessions dropped dramatically from Spring 2015 since CLM made more stations available during the day.

Printing

The total sheets printed in Fall 2017 increased slightly to 731,992 (up 0.3% from Spring 2017). The average sheets printed per client (of those who printed) was 39.86. The number of sheets printed per quarter dropped dramatically from 08-09 levels due to a new printing rate implemented in Fall 2009.



There were 15,653 color pages printed, an increase of 17.1% from Spring 2017.



There were 5,639 wireless print jobs, an increase of 1,068 from Spring 2017. There were 758 unique clients who printed through the wireless printing system.

